



Spring Summer '26

TRENDS LOOKBOOK



TACTILE NATURE



DIVE INTO THE WILD

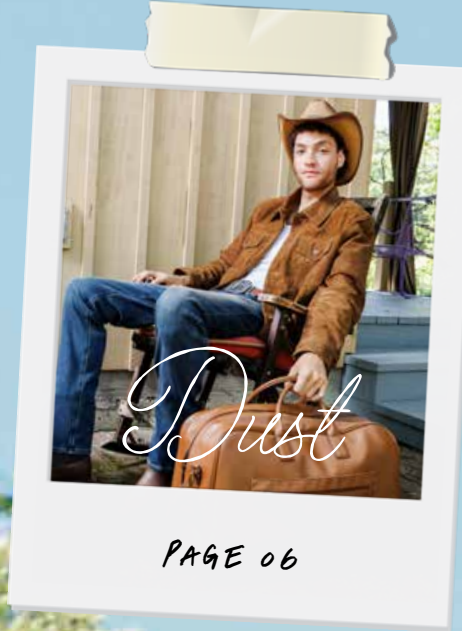
Spring awakens. Summer re-energizes. And this season, connection is something you can truly feel. Our Spring/Summer 2026 Lookbook celebrates the textures, materials, and sensory moments that bring people together. Because when digital overload sets in, tactile design stands out.

That's where your swag can thrive.

Tactile Nature blends botanical inspiration with touch-first details, woven fibers, soft canvas, sun-warmed wood, and organic forms that feel alive in your hands. Here, connection isn't just communicated, it's experienced.



SS '26



PAGE 06



PAGE 18



PAGE 30



PAGE 42



81% OF THE PRODUCTS
FEATURED SUPPORT MINORITY
COMMUNITIES, SOCIAL CAUSES,
AND/OR THE EARTH.



Eco-Friendly

Products that are beneficial or not harmful to the environment. Many of our partners are also members of 1% for the Planet.



Social Giveback

Brands that contribute a portion of profits to social causes and/or are committed to ethically sourced materials.



Underrepresented

Companies owned or led by an executive from an underrepresented community, including BIPOC, AAPI, LGBTQ+, and women.



More Colors

The product shown is in a color that reflects this trend but is also available in additional colors.



NEW → Global

CreativeMC can also source these brands or similar products outside the U.S. Check with your Brand Stylist to specify which region(s).

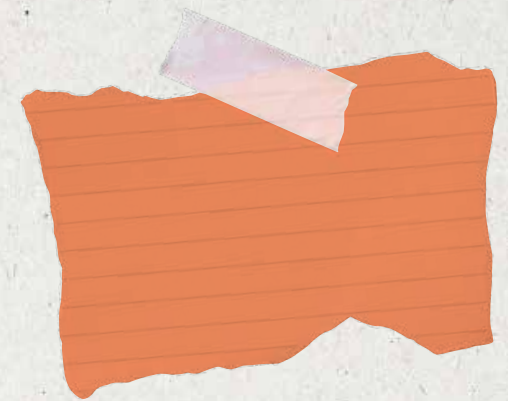


Price Point

Price ranges indicated are:
\$ = \$1-\$30
\$\$ = \$31-\$75
\$\$\$ = \$76-\$150
\$\$\$\$ = \$151+

Credits

Credits: Creative direction and graphic design by **Camilla Behrens** in Los Angeles, CA. Photography by **Jonah Reenders**, Styling by **Abby Young Styling**, Hair and Makeup by **AJ Lashmett** – all in the San Francisco Bay Area. Other photography courtesy of Unsplash.



Papaya

Dust

TIMEWORN MATERIALS AND TEXTURES COME TOGETHER IN A GROUNDED, WORKWEAR-INSPIRED AESTHETIC ROOTED IN UTILITY.



Saddle Tan



Washed Denim



Aubergine

Dust



"PRACTICAL AT ITS CORE, YET ELEVATED IN ITS DETAILS."
- ELLIOT GROSS, BRAND STYLIST



- 01 PUPLIDS CAPS FOR DOGS | \$
- 02 BRASS SEALING WAX CUSTOM STAMP HEAD | \$\$
- 03 HELLA TEA BLUE JEANS & WHITE TEAS | \$
- 04 CUTTER & BUCK RECYCLED WOMENS V-NECK POLO | \$\$
- 05 DESK PLANTS ARCH MOSS AWARD | \$\$
- 06 SUNSKI SUNGLASSES | \$\$
- 07 CARHARTT COTTON CANVAS CAP | \$
- 08 INDEPENDENT TRADING CO. FLEECE SHORTS | \$
- 09 OCEAN BOTTLE BREW FLASK | \$\$
- 10 DELIGHT PATISSERIE CUSTOM SHORTBREAD COOKIES | \$
- 11 SIMPLE MODERN 30 OZ MESA LOOP BOTTLE | \$
- 12 QUINCE WATER REPELLENT PUFF COMMUTER | \$\$\$
- 13 MAPLE RIDGE FARMS COMFORTING VIBES CRATE | \$\$
- 14 COFFEE STREET SPECIALTY COFFEE IN BRANDED POUCHES | \$

- 15 PORT AUTHORITY SIGNATURE APRON | \$
🌿🍷🌈
- 16 LUELLA'S SOUTHERN POPCORN SALTED CARAMEL FLAVOR | \$
🌿🌈
- 17 CUSTOM ROCKER STAMP | \$\$
- 18 AHEAD THE CARAMEL CAP | \$
🌿🌈
- 19 PORTLAND GEAR CASCADE KIT | \$\$
🌿
- 20 CROSLLEY WIRELESS SPEAKER | \$
🍷🌈
- 21 CORKCICLE 30 OZ GO CUP | \$\$
🌿🍷🌈
- 22 PAPIER SOFTCOVER RECIPE JOURNAL | \$\$
🌿🍷🌈
- 23 HERITAGE SUPPLY GROW TRIO | \$
🌿🍷🌈
- 24 SWANKY ENGRAVED GLASSES | \$\$
🍷
- 25 SWANKY ENGRAVED GLASS FLASK | \$\$
🍷
- 26 THREAD CROSSBODY BAG | \$
🌿🍷🌈
- 27 PATAGONIA DAY PACK | \$\$\$
🌿🍷🌈🌍
- 28 RECESS PICKLEBALL DATE NIGHT PADDLE SET | \$\$\$\$
🍷🌈



15



16



17



18



21



\$\$\$26 ✦

22



23



20

19



24

25



26



27



28



Dust



Dust

31



32



"WORN-IN AND SUN-WARMED-
STYLE SHAPED BY REAL MOMENTS."
- MENA TRIGUEROS, SENIOR SALES LEAD

33



34



36



35



37



38



39



40



41



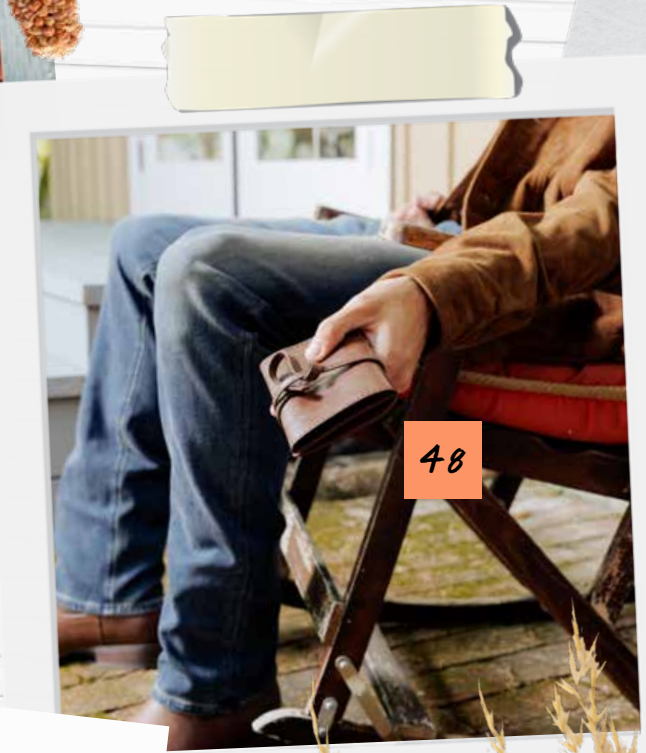
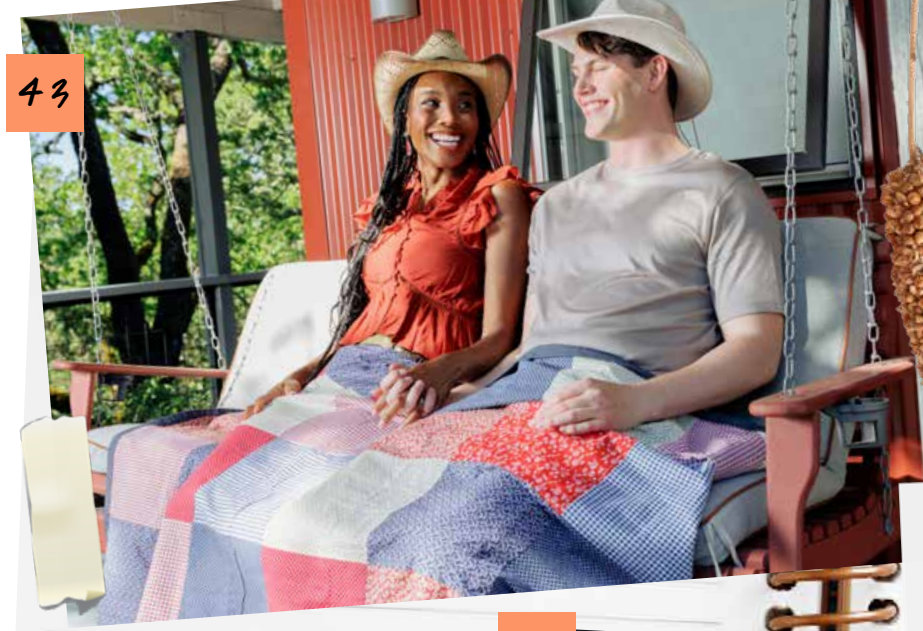
42



- 29 BYBBA CONCH TOTE | \$\$
🌿🍷🍷🍷
- 30 MODERN SPROUT ROOTED CANDLE | \$
🌿🍷🍷🍷
- 31 ECOSTIKS CUSTOM FABRIC STICKERS | \$
🌿🍷🍷
- 32 AS COLOUR DENIM HALF APRON | \$
🌿🍷🍷🌍
- 33 20 OZ DENALI TUMBLER | \$
🍷🍷
- 34 TURTLEBOX SPEAKER | \$\$\$\$
🍷🍷
- 35 THREAD UTILITY TOTE BAG | \$\$
🌿🍷🍷
- 36 FOSTER & RYE WHISKEY BARREL DRINK DISPENSER | \$\$
- 37 TOPO DESIGNS ROVER PACK MICRO | \$
🌿🍷🍷
- 38 BIOLITE CAMP STOVE | \$\$\$\$
🌿🍷🍷
- 39 MARINE LAYER WOMEN'S LUXE SUEDED TEE | \$\$
🌿🍷🍷
- 40 WP STANDARD THE WINE TOTE | \$\$\$
🍷
- 41 WP STANDARD MR. GRUMPY LEATHER SLIPPERS | \$\$\$
🍷
- 42 SIMBA BELT BUCKLES | \$\$

Dust

- 43 PICNIC TIME FESTIVAL BLANKET | \$\$
🌿
- 44 SWANKY WOODEN LINKS WATCH | \$\$
🌿📏
- 45 PORT AUTHORITY DENIM APRON | \$
🌿📏🌿
- 46 VISKI CRYSTAL CIGAR GLASS | \$\$
🌿📏
- 47 UNDER ARMOUR MEN'S HEATHER 1/4 ZIP | \$\$\$
📏🌿🌍
- 48 SWANKY ECO LEATHER TECH ROLL UP | \$\$
🌿📏🌿
- 49 NATURAL TRENDS GLOVE BOX KIT | \$\$
- 50 QUINCE ITALIAN SUEDE SHOPPER TOTE | \$\$\$\$
🌿📏🌿
- 51 MAPLE RIDGE CHOCOLATE ALMONDS IN WOODEN BOX | \$\$
📏🌿
- 52 THE FIT STARTER SET | \$\$
📏🌿
- 53 TOPO DESIGN COVERALL | \$\$\$
🌿📏🌿
- 54 PONCHO PERFORMANCE DENIM WORK SHIRT | \$\$\$
🌿
- 55 OUT OF THE WOODS JUTE TRIM BOX TOTE | \$\$
🌿📏
- 56 SPECTOR & CO COGNAC DUFFEL | \$\$\$\$
🌿📏🌿





Blush Rose

Lace

QUIETLY EXPRESSIVE. THIS LIGHT AND LAYERED TREND WEAVES SOFTNESS AND SHADOW INTO AN ETHEREAL, DREAMLIKE MOOD.



Soft Dove



Buttercream



Warm Sand

Lace



02



\$\$\$26 ✦



07



10

11

09

12

13

08



01

"SUBTLE DETAILS MAKE THE BIGGEST IMPACT."
- TATIANA GONZALES, SENIOR BRAND STYLIST ASSISTANT



03



06



04

05



- 01 FELLOW CARTER COLD TUMBLER | \$\$
🌿 🌍
- 02 FIVE-INCH BOTTLE OPENER | \$
- 03 FEED ORGANIC COTTON POUCH | \$
🌿 🌿
- 04 LUX AND NYX ORIGAMI BELT BAG | \$\$\$
🌿 🌿 🌿 🌿
- 05 FISHER SPACE PEN ANTIMICROBIAL BRASS PEN | \$
- 06 COLORTONE TIE-DYED SHIRT | \$
🌿 🌿
- 07 ALLBIRDS VARSITY AIRY | \$\$\$
🌿 🌿
- 08 PINKY UP MINI GLASS TEA PRESS POT | \$
🌿
- 09 INFINITUNES WIRELESS SPEAKER | \$\$
- 10 PICNIC TIME INSULATED WINE & CHEESE TOTE | \$\$
🌿
- 11 PORT AUTHORITY WAFFLE KNIT BLANKET | \$
🌿 🌿 🌿
- 12 MAPLE RIDGE FARMS CHARCUTERIE STARTER | \$\$
🌿 🌿
- 13 RIPL TECH POUCH | \$\$
🌿 🌿 🌿
- 14 KASHWÉRE BABY BLANKET AND BEANIE SET | \$\$\$
🌿 🌿

- 15 SIMPLE MODERN 30 OZ MESA LOOP BOTTLE | \$
🌿🌸🌈
- 16 NOMADIX POCKET TOTE | \$\$
🌿🌸🌈
- 17 RICHARDSON TRUCKER HAT | \$
🌈
- 18 NODPOD MINERALIZED SILK SLEEP MASK | \$\$
🌸🌈
- 19 OCEAN BOTTLE 24 OZ PEAK ORIGINAL | \$\$
🌿🌸🌈🌍
- 20 OTTERBOX 10 OZ TUMBLER WITH LID | \$
🌿🌸🌈
- 21 OHOM SELF-HEATING TEAPOT | \$\$\$
🌸🌈
- 22 SACKCLOTH AND ASHES X MORGAN HARPER NICHOLS BLANKET | \$\$\$
🌿🌸🌈
- 23 QUINCE MULBERRY SILK SLEEP MASK | \$\$
🌿🌸🌈
- 24 NUMO LEATHER COASTER PACK | \$
🌿
- 25 VISKI CRYSTAL COUPE GLASSES | \$
🌿🌸
- 26 ORIGINAL FAVORITES SUPIMA COTTON TEE | \$\$
🌿🌈
- 27 PINKY UP GLASS TRAVEL TEA MUG | \$
🌸🌈
- 28 PATTERN AND PAIR PILATES SOCKS | \$
🌈



Lace





Lace

\$\$\$26 ♦



29



30



32



33



34

"SOFT IN FEEL, THOUGHTFUL IN FORM—THIS IS WHERE ELEGANCE MEETS INTENTION."
— LISA GRUZAS, SALES MANAGER



37



38



41



42



36



35



39



40

- 29 JERZEES UNISEX BASEBALL TEE | \$
🍃🍷🌈
- 30 RIPL SOL BLANKET | \$\$\$
🍷🍷
- 31 VISKI GLACIER ROCKS SOAPSTONE ICE CUBES | \$
🍷🍷🌈
- 32 RUMPL PUFFY THROW BLANKET | \$\$\$
🍷🍷🌈
- 33 SUPLMNT 14 OZ WATERBOTTLE WITH STRAW | \$
🍷🍷🌈
- 34 GOT BAG SLING BAG | \$\$
🍷🍷🌈🌍
- 35 SPORT-TEK LACES | \$
🍷🌈
- 36 TERRA THREAD ORGANIC COTTON PENCIL BAG | \$
🍷🍷🌈
- 37 CUTTER & BUCK RECYCLED MEN'S PIQUE COTTON POLO | \$\$
🍷🍷🌈🌍
- 38 VONTELLE ROSE SUNGLASSES | \$\$\$\$
🍷
- 39 HIJA DE TU MADRE JEFA NECKLACE | \$\$
🍷
- 40 SOCK CLUB ANKLE SOCKS | \$
🍷🌈
- 41 STAKT YOGA MAT | \$\$\$
🍷🍷🌈
- 42 INSULATED WINE BOTTLE TOTE | \$
🍷

- 43 FOSSA ALLURE HOODIE | \$\$\$
🌿🌸🌷
- 44 OGIO WOMEN'S PERFORMANCE SET | \$\$\$
🌿🌷🌸
- 45 RHONE QUARTER-ZIP | \$\$\$
🌿
- 46 VNTNA MEN'S CREWNECK SWEATER | \$\$\$
🌿🌸🌷
- 47 SARANONI LUSH MINI BLANKET | \$
🌸🌷🌸
- 48 HOST 20 OZ FREEZE WATER BOTTLE | \$
🌿
- 49 NATIVE UNION CABLE DUO | \$\$
🌿
- 50 CHARCHARMS GARDEN WATER BOTTLE CHARMS | \$
🌸🌷
- 51 HELLY HANSEN DUFFLE | \$\$\$
🌷🌸🌷
- 52 RABBIT SKINS TERRY CLOTH HOODED TOWEL | \$
🌸🌷
- 53 HYDROFLASK 20L INSULATED TOTE COOLER | \$\$\$
🌿🌷🌸
- 54 QUINCE COTTON CASHMERE SWEATER | \$\$
🌿🌸🌷
- 55 NATURAL TRENDS LOOFAH BAG GIFT SET | \$
- 56 STANLEY 24 OZ AEROLIGHT FLIP STRAW BOTTLE | \$\$
🌿🌷🌸🌷

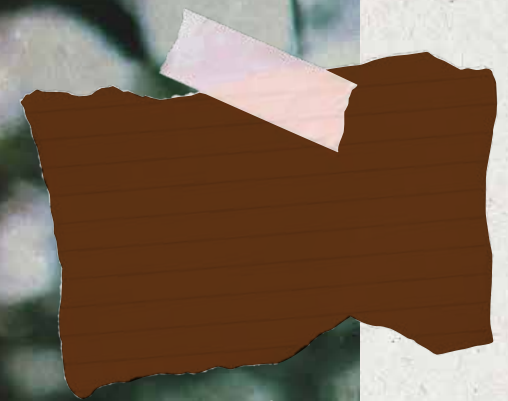


5426 ✨



Lace





Bark

Meadow

WILD, FREE, AND SUN-DRENCHED. THIS TREND CAPTURES THE SPONTANEITY OF NATURE IN FULL BLOOM, INVITING DANCE, PLAY, AND MOVEMENT.



Lake



Open Sky



Moss

Meadow



\$\$\$26 ✦



01



02



03



04

"IT'S LIGHTWEIGHT, PRACTICAL,
AND READY FOR ADVENTURE."
- ETHAN NGUYEN, JUNIOR BRAND STYLIST

05



06



07



08



12



13



14



09

11

10

- 01 ADIDAS GOLF HALF-ZIP | \$\$
🌿📱🌐
- 02 BREVITÉ DAILY BACKPACK | \$\$\$
🌿🌸📱🌈
- 03 LIFE360 TILE TRACKER | \$
🌈
- 04 COTOPAXI HIP PACK | \$\$
🌿📱🌈
- 05 AS COLOUR TWO-TONE CAP | \$
🌿📱🌈🌐
- 06 KOBO CANDLES PLANT THE BOX SOAP BAR | \$\$
🌿🌈
- 07 RUMPL EVERYWHERE MAT | \$\$\$
🌿📱🌈
- 08 MARMOT SHORT SLEEVE WOVEN SHIRT | \$\$
🌿📱
- 09 PICNIC TIME GARDEN WAGON WITH 3 TOOLS | \$\$\$
🌿
- 10 MOCKTAIL CLUB ALCOHOL-FREE DRINKS | \$
🌸📱🌈
- 11 FROSTY COOLER BAG | \$\$
- 12 AS COLOUR NYLON BUCKET HAT | \$
🌿📱🌈🌐
- 13 CROSLLEY BOOM BOX BLUETOOTH SPEAKER | \$
📱🌈
- 14 APPOINTED PERFECTION PENCIL | \$
🌿🌸📱🌈

- 15 STOPNGO 14 OZ CANVAS TOTE | \$
🌿 🌈
- 16 RAEN OPTICS POLARIZED SUNGLASSES | \$\$\$\$
🌿 🌈
- 17 INTERLINK SOFT WOVEN JOURNAL | \$
🌿
- 18 MARINE LAYER WOMEN'S AFTERNOON HOODIE | \$\$\$
🌿 🌈
- 19 BALLAST BEACH PILLOW | \$\$
🌿
- 20 NORI PRESS IRON | \$\$\$
🌿 🌈
- 21 PAPIER ADVENTURE TRAVEL JOURNAL | \$\$
🌿 🌿
- 22 BREVITÉ THE WHENEVER BAG | \$\$\$
🌿 🌿 🌈
- 23 CROCS CLASSIC MEDIUM TOTE | \$\$\$
🌿 🌈
- 24 SUNSKI LAGO SUNGLASSES | \$\$\$
🌿 🌈
- 25 PATAGONIA SURF BRIMMER HAT | \$\$
🌿 🌈 🌍
- 26 PAPIER LARGE NOTE CARDS | \$\$
🌿 🌿
- 27 GALAXY BALLOONS MINI PET TRAVEL BOTTLE | \$
🌿
- 28 1664 HEATHERED DOPP KIT | \$
🌿



15

16



17



20



19



18



21



22



23

\$\$\$26 ✨



24



25



26

Meadow



28



27





Meadow

29



30



32



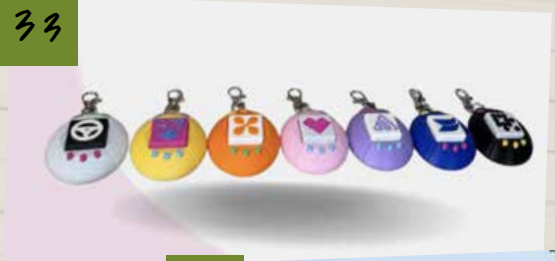
31



35



33



34



4426 ♦

38



37



36



39



40



41



42



"FRESH AIR, SWEET INDULGENCE—
WHERE SIMPLE MOMENTS SHINE."
— JACKIE GREGOIRE, SENIOR BRAND STYLIST

- 29 PUCKER PACK LIP BALM | \$
🌿🌈
- 30 THE AVE CUSTOM PAINTED SNEAKERS | \$\$\$
🌸🌈
- 31 VISKI GATSBY TUMBLERS | \$\$
🌿🌸
- 32 SOCK CLUB QUARTER CREW SOCKS | \$
👉🌈
- 33 THE BEAR BAR TAMAGOTCHI CLICKER | \$
🌿👉🌈
- 34 PICNIC TIME MINI BEAN BAG THROW GAME | \$\$
- 35 PARAGON SUBLIMATED POLO | \$
🌈
- 36 SARANONI WAFFLE KNIT ROBE | \$\$\$
🌸👉🌈
- 37 SPECTOR & CO 32 OZ. WATER BOTTLE | \$\$
👉🌈
- 38 PILOT GEL INK PEN | \$
👉🌈
- 39 RAINS SMALL DUFFLE | \$\$\$
🌿🌈🌐
- 40 THREAD LANYARD | \$
🌿👉🌈
- 41 SWEETER CARDS SUGAR COOKIES | \$
🌸🌈
- 42 THREAD CROSSBODY BAG | \$
🌿👉🌈

- 43 NODPOD LIMITED EDITION SLEEP MASK | \$\$
🌿❤️🌈
- 44 TOTALLY CHOCOLATE CUSTOM COOKIE | \$\$
🌿❤️🌈
- 45 THREAD WALLET | \$\$
🌿❤️🌈
- 46 SOLGAARD LIGHTWEIGHT ROLLER CARRY-ON | \$\$\$\$
🌿❤️🌈
- 47 RIPL 17 OZ BOTTLE | \$\$
🌿❤️🌈
- 48 VARLEY ZIP SWEATSHIRT | \$\$\$
🌿🌈
- 49 THE GOODS RECYCLED TRAVEL WALLET | \$
🌿❤️
- 50 BULLDOG PACKAGING FOIL-LINED BAGS | \$
🌿🌈
- 51 CHOCOCRAFT CUSTOM PREMIUM BELGIUM CHOCOLATES | \$\$
🌈
- 52 CHARCHARMS BOTTLE BOOT | \$
🌿🌈
- 53 QUIKFLIP HERO HOODIE | \$\$
🌈
- 54 ARCTIC ZONE PICKLEBALL TOTE COOLER | \$\$
🌿🌈
- 55 ASTORIA COTTON CANVAS BEACH TOTE | \$
🌈
- 56 GALLEVANT WIRELESS POWER BANK WITH KICKSTAND | \$\$
🌈

43



47



48



5426



51



54



Meadow

44



50



53



55



45



46



49



52



56





Night Sky

Sunset

WARMTH MEETS RADIANCE IN A GLOW OF GOLDEN HOUR
GLAMOUR, WHERE ELEVATED DESIGN AND LUMINOUS
TONES CREATE UNFORGETTABLE MOMENTS.



Marigold



Magenta



Rose



Sunset

01



02



05



04



03



06



07



"ELEVATED DESIGN TRANSFORMS MOMENTS INTO MEMORIES."
- ASHLEY SEM, BRAND STYLIST

5526 ✦

08



09



10



11



13



14



12



- 01 STORMTECH WOMEN'S POLO | \$\$
🍃🍷🌈
- 02 BOG BAGG BABY BOGG BAG | \$\$\$
🍷🍷🌈
- 03 MAPLE RIDGE CHOCOLATE FAVORITES | \$\$
🍷🌈
- 04 ANYROPE CAP | \$
🌈
- 05 ALLBIRDS VARSITY SNEAKER | \$\$\$
🍷🍷🌈
- 06 TRUE BRANDS BLUSH RAINBOW SHAKER | \$\$
🍷
- 07 ANECDOTE CANDLES CUSTOM TUMBLER | \$
🍷🍷🌈
- 08 HARIBO HAPPY CHERRIES GUMMIES | \$
🌈🌍
- 09 OSPREY HANGING TOILETRY KIT | \$
🍷🍷🌈
- 10 HYDROFLASK INSULATED FOOD JAR | \$\$
🍷🍷
- 11 ACEHIGH PHONE CHARGER | \$\$
🍷
- 12 BAYSIDE RECYCLED COTTON BOAT BAG | \$\$
🌈
- 13 WIDGETEER JEANNE FITZ BOWL AND SALAD SERVER SET | \$\$
🍷🍷
- 14 BULLET MINI BACKPACK | \$
🌈

- 15 MORE THAN CHOCOLATE
CUSTOM CHOCOLATE BUSINESS CARDS | \$
📄🍫
- 16 ORIGAUDIO
CRYSTAL CLEAR WIRELESS SPEAKER | \$\$
- 17 SPECTOR & CO
18 OZ WATER BOTTLE | \$
🍷📄
- 18 SWEETER CARDS
SWEET AND SOUR GUMMY BEARS | \$
🍬📄
- 19 DESK PLANTS
BUSINESS CARD HOLDER | \$
🌿📄
- 20 SILICON STRAW AND BRUSH SET | \$
🍷📄
- 21 NEXT LEVEL APPAREL
WOMEN'S COTTON TANK | \$
👚📄
- 22 ZAYAS CANDLE
REED DIFFUSERS | \$\$
🕯️📄
- 23 DOUBLE DIVA
COMPACT MIRROR | \$
🪞📄
- 24 NIXON
CHRONO MATTE & GOLD WATCH | \$\$\$\$
🕒📄
- 25 STIO
BASIN CARRYALL | \$\$\$
👜📄
- 26 ALUMINUM BOTTLE CAN OPENER | \$
🍷📄
- 27 COLLAPSIBLE CHARGING LAMP | \$
💡📄
- 28 BOSKA TAPAS
FONDUE NERO | \$\$
🍷📄



Sunset





Sunset



30



32

33



35

36



\$\$\$26

37



38



40



42



41



39



29

31



34



"PRODUCTS THAT BRING PEOPLE TOGETHER SHINE BRIGHTEST."
- CLAUDIA SANCHEZ, JUNIOR BRAND STYLIST

- 29 PRIDEBITES CUSTOM BOTTLE DOG TOYS | \$
♡ 🐾
- 30 TIMBUK2 CARRY-ON LUGGAGE | \$\$\$\$
🐾 ♡ 🐾
- 31 WIDGETEER JEANNE FITZ SCALLOPED GLASSES | \$\$
🐾 🌸
- 32 SPECTOR & CO GOLF-THEMED WINE ACCESSORY SET | \$\$
- 33 SET OF 4 WINE CHARMS | \$
🐾
- 34 WELL STUDIO MUSCLE MASSAGE ROLLER | \$\$
- 35 PETER MILLAR BACKPACK | \$\$\$
🌸
- 36 VONTELLE IDIA EYE GLASSES | \$\$\$\$
🌸
- 37 SOLAR CARIBINER CLIP LIGHT | \$
- 38 NESPRESSO X DE'LONGHI PREMIUM ESPRESSO MACHINE | \$\$\$\$
♡ 🐾 🌐
- 39 TRUEZOO BUDDY THE DOG CORKSCREW | \$
🌸
- 40 HOST INSTA-CHILL CAN SLEEVE | \$
🐾 🐾
- 41 ELEMENTAL ICONIC CHARM WATER BOTTLES | \$
🐾 🌸 ♡ 🐾
- 42 CUTS CLOTHING CURVE-HEM TEE | \$\$
🐾 ♡ 🐾

43 BEAMIE BABY WIRELESS SPEAKER | \$

44 WP STANDARD RATTAN SLING | \$\$\$\$

45 INQ SMART PEN WRITING SET | \$\$\$\$

46 YETI DOG BOWL | \$\$\$

47 BAMBOO WINE OPENER KIT | \$

48 KINTO PLAY TUMBLER

49 TEAPRESSA CUSTOM MIXER TRIO | \$

50 CUISINART CITRUS JUICER | \$\$

51 NUTRIBULLET PORTABLE BLENDER | \$\$\$

52 HERITAGE SUPPLY CO. RECYCLED LAPTOP PORTFOLIO | \$\$

53 QUIKFLIP WOMEN'S HOODIE | \$\$

54 SOLO STOVE TABLETOP FIRE PIT | \$\$\$

55 VISKI SMOKED COCKTAIL KIT | \$\$\$

56 NORTH FACE ROLLER DUFFEL | \$\$\$\$



43



46

48



45



44



47



49



5426 ♦

50



51



53



54



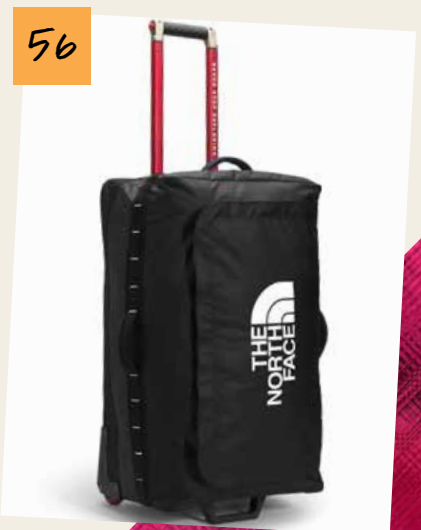
55



52



56

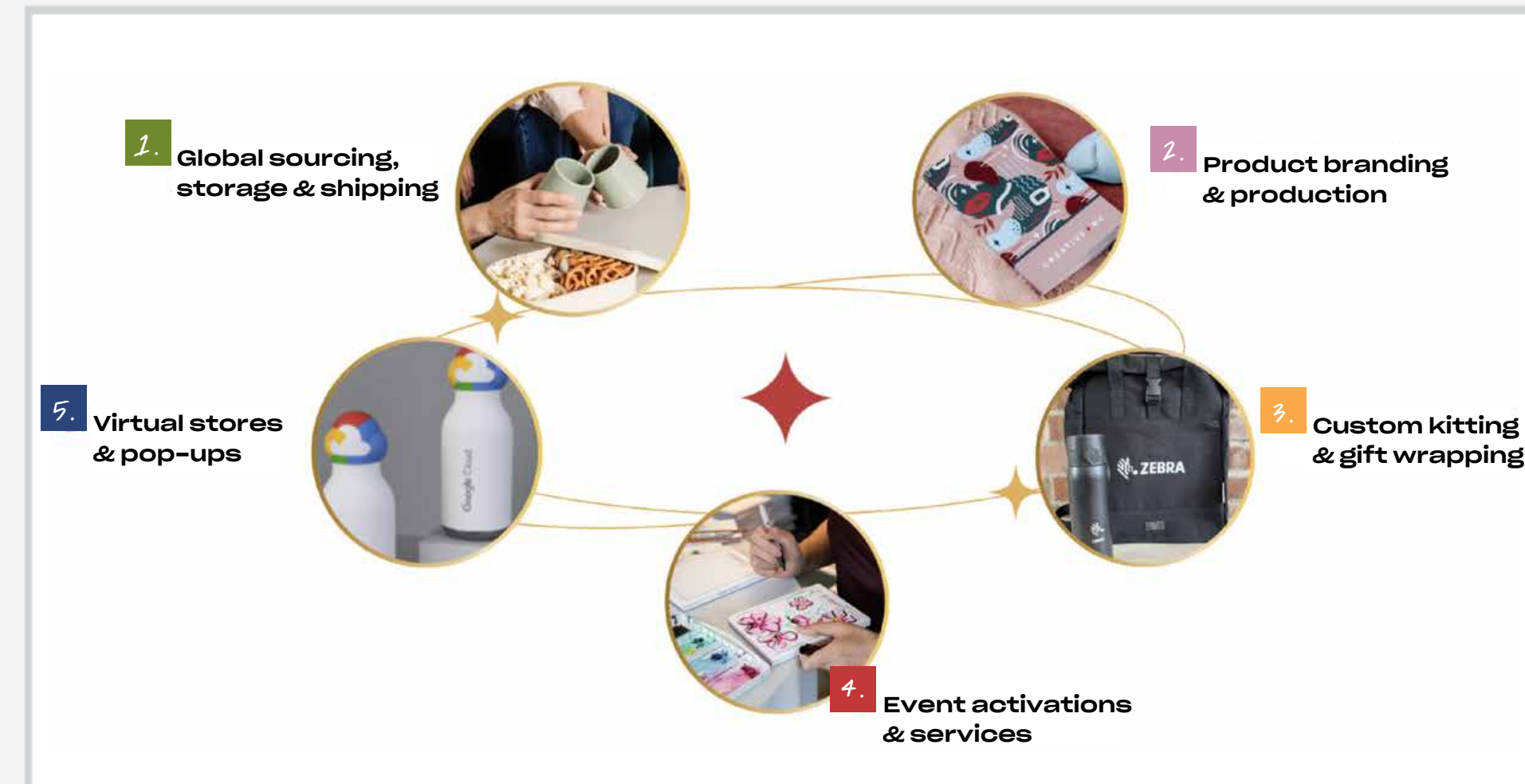


Sunset

CREATIVEMC 360° SERVICES

SAN FRANCISCO | SACRAMENTO | PRAGUE

ESTABLISHED IN 1962





1.

Global Services

Deliver consistent swag experiences worldwide through our U.S. team, Prague-based sister company Bontonfilm Promotions, and trusted global partners. By sourcing and shipping within regions, we secure comparable products efficiently – saving time, reducing costs, and ensuring brand consistency.



Members of our team in Prague, Czechia



New Hire Kit for SentinelOne



Campaign merch for Starbucks

WE CURATE THE WORLD TO FIND THE BEST BRAND PARTNERS

GLOBAL VENDOR EXAMPLES





MORGAN LEWIS
BRANDED CAMERA

2.

Product Branding

Bring your brand to life through swag strategies that deliver impact, custom product development, and extensive decoration options. We manage every detail – from concept and design to vendor coordination and quality-controlled production.

A SAMPLING OF DECORATION METHODS

- Screen, Digital, or Pad Print
- Heat Transfer
- Dye Sublimation
- Appliqué
- Foil Stamp
- Laser Engrave
- Laser Etch
- Satin Etch
- Embroidery
- Custom Embroidered
- Patch
- Custom Woven Label
- Deboss (blind and/or color filled)

A FEW RECENT PROJECTS



Behrens Studio Holiday Gift



CreativeMC Team Holiday Gift



SentinelOne Pet Challenge
Winners Kit

3.

Custom Kitting



SWAG STYLE EDIT
KIT

Deliver thoughtfully curated gift experiences with custom kits, premium packaging, and seamless distribution. From concept to unboxing, we manage every detail – offering bulk shipping, drop shipping, or on-demand fulfillment through virtual stores for easy recipient redemption.



4.

Activations

ABBY YOUNG STYLING
COLOR ANALYSIS

Activations create memorable, hands-on experiences that build emotional connection, elevate brand perception, and drive engagement. CreativeMC manages everything from concept to execution – including all branded swag.

Since every event is unique, contact your Brand Stylist for more pricing info for your project!



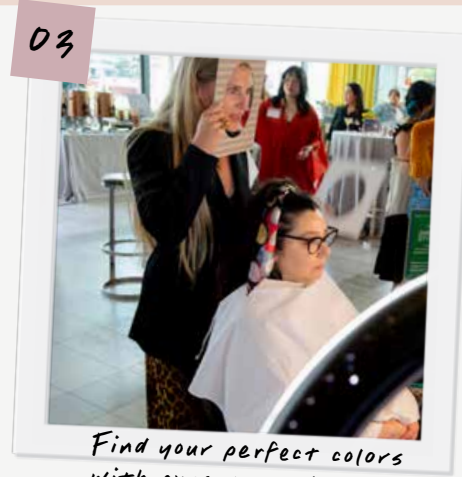
01

Custom denim gifting with flair



02

Personalize your items with playful charms



03

Find your perfect colors with expert styling



04

Botanical events inspired by nature



05

Take home bold socks with your patch picks



06

Make your own pack of lip balm faves



07

AI-powered photos with creative digital effects



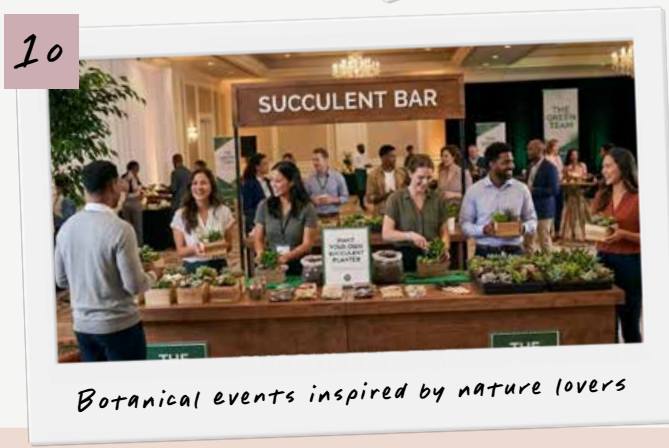
08

Learn sushi-making in fun guided sessions



09

Custom illustrated character keepsakes



10

Botanical events inspired by nature lovers



11

Decorate with eco custom stickers



12

Try stylish eco shades built for adventure

- 01 INTERNATIONAL GIFTING BLUE JEAN BAR
- 02 CHARCHARMS CHARM BAR
- 03 ABBY YOUNG STYLING COLOR MATCH
- 04 THE LITTLE SHOP OF HORTICULTURE
- 05 SOCK101 SOCK BAR
- 06 HPG LIP BALM BAR
- 07 KANDE AI PHOTOBOOTH
- 08 BREAKTHROUGH SUSHI SUSHI CLASSES
- 09 SWANKY CHARACTER CREATIONS
- 10 DESK PLANTS SUCCULENT BAR | \$\$\$\$
- 11 ECOSTIKS STICKER BAR
- 12 SUNSKI SUNGLASSES POP-UP

POP-UP SHOP



HOLIDAY GIFT LANDING PAGE

COMPANY STORE



COMPANY STORE HOMEPAGE

FLEXIBLE TECH



CUSTOMIZED TECH EXAMPLE

5.

Virtual Stores



PRODUCTBOARD ESTORE

Engage colleagues and customers anywhere with a consistent, hassle-free swag delivery experience. From short-term pop-ups for events to always-on virtual stores, our customizable platform supports on-demand delivery, regional product assortments, SSO integration, and seamless redemption.

LET'S CREATE
UNFORGETTABLE
BRAND EXPERIENCES

CREATIVE ♦ MC

CREATIVEMC.COM

415.941.4000

TEAM@CREATIVEMC.COM

