








CREATIVE MC

SPRING/SUMMER 2022 TRENDS

SPRING/SUMM
PRING/SUMM
ING/SUMM
G/SUMM
SUMM
SUMM
G/SUMM
ING/SUMM
RING/SUMM
SPRING/SUMM

A PENT-UP DESIRE 
TO GET AWAY  AND LIVE
IN THE MOMENT  HAS
OFFICIALLY UNLEASHED
 A PLAYFUL ATTITUDE
THIS SEASON—NOT TO
MENTION A GLOBAL
TRAVEL RUSH. 

THE NEWEST SWAG 
IS OOZING  JOYOUS
 DELIGHTS, FROM THE
COLORS TO THE COMFY,
CASUAL FEEL. 
SPRING/SUMMER 2022
IS A SEASON TO SMILE
ABOUT. 

ICON KEY



ECO-FRIENDLY

The product is beneficial or not harmful to the environment. Going green can be a win-win! You'll not only make a powerful. brand statement, but CreativeMC will also plant 10 trees for every eco-friendly product order. Help us help Earth.



GIVEBACK

The manufacturer contributes a portion of profits to social causes and/or is committed to ethically sourced materials. Shine a light on your brand values by making a positive impact with your swag choices. Employees and customers will show their brand love right back!



UNDERREPRESENTED

The brand is owned or led by a an executive from an underrepresented community, including BIPOC, AAPI, or women. We actively source and champion emerging and established brands from these amazing communities.



MORE COLORS AVAILABLE

The product shown is in a color that reflects this trend but is available in additional colors. Contact your Brand Stylist for details on color options and give the product your own brand vibe with a stunning decoration.

CREDITS

Lifestyle and in-studio photography by DOMINIK KUČERA and GABRIELA ZIMOVÁ at FOTÍME VĚCI in Prague, Czech Republic. All other photography courtesy of Unsplash.

06

BUBBLEGUM

16

ZEN

28

PSYCHEDELIC

42

FRESH

52

BRAND STYLING

54

PREMIUM GIFTING

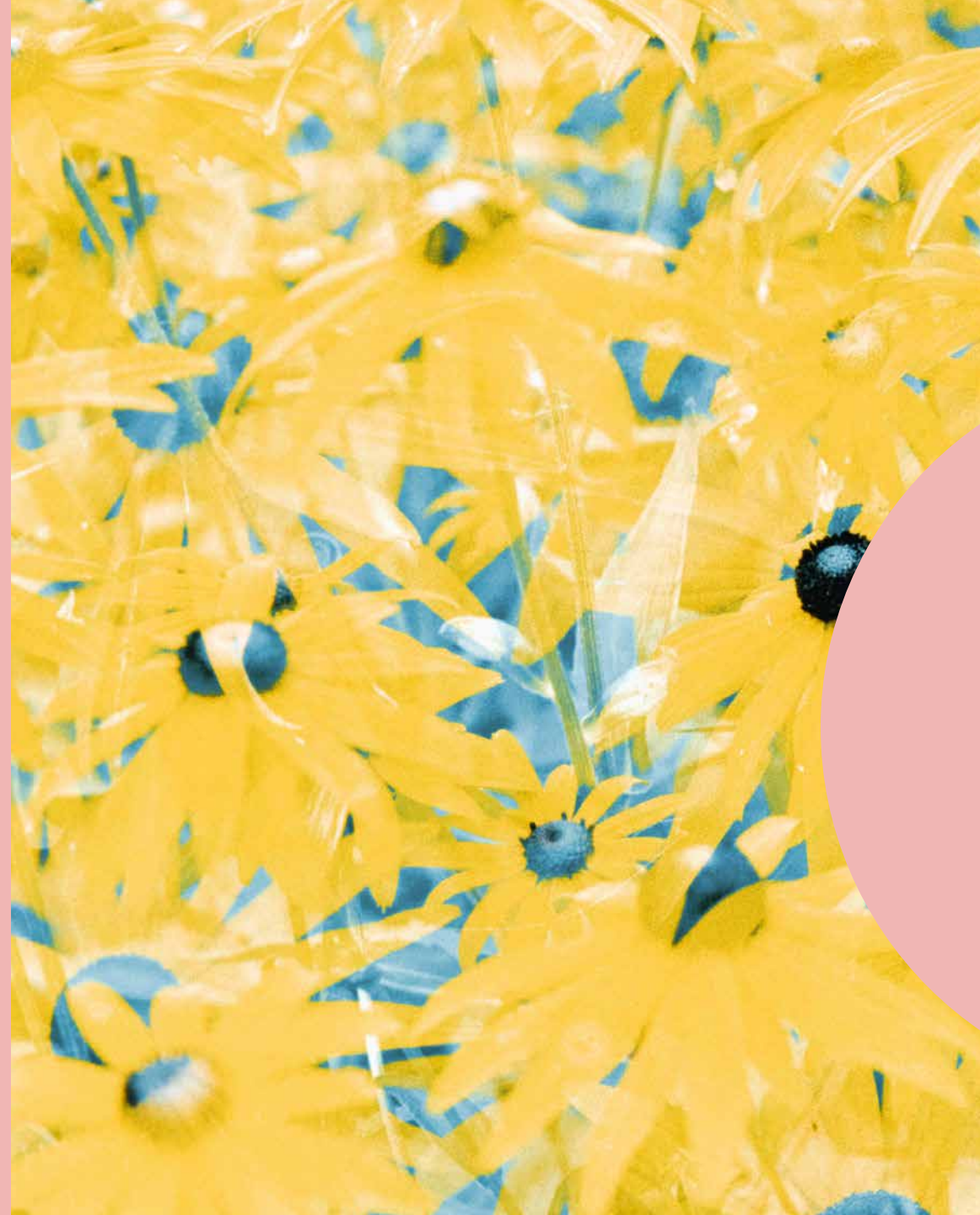
56

SWAG FOR GOOD

58

DISTRIBUTION

BUBBLEGUM
BUBBLEGUM
BUBBLEGUM
BUBBLEGUM
BUBBLEGUM
BUBBLEGUM
BUBBLEGUM
BUBBLEGUM



This trend will leave you brimming with optimism, with its buttery-soft fabrics and versatile, warm colors. Mix them all up with wild abandon to reveal your brand's playful edge and embody

a wonderland
of possibilities



DISTRICT® MEN'S FLEECE HOODIE

This pop of fun-colored fleece hoodie adds that extra “it” factor to any look.



FELLOW® ARTIST SERIES MUG

This custom design by artist Melissa Koby blends watercolor painting and digital illustration and will remind your recipients to enjoy the simple moments without compromising the coffee experience.



TILLAK COHO CAP

This everyday cap is breathable, quick-drying, and on trend, making it versatile for wearing in the office, on the daily commute, or at the gym.



SEASIDE TOTE

This fun neoprene tote starts off flat but then further expands to take things poolside, market side, or to the office.



BUCKET HAT

Bucket hats are back in style so add this 100% cotton piece to your swag collection to give your brand a seasonal refresh.



BUTTERSCOTCH SWEAT MATE

As seen in *The New York Times'* 2021 holiday gift guide, this washable, reusable wet bag has a sealed lining that won't leak and holds in all wetness and odors until it's dumped in the wash.



BARONFIG GROW DAILY JOURNAL

Kickstart a team's or organization's journaling practice with this journal that provides daily topic prompts.





CABANA STRIPE MICROFIBER BEACH TOWEL

Show off your brand's summer spirit at the beach or poolside with this fun microfiber beach towel.



**ASOBU® DOG BOWL
BOTTLE**

A pet owner's best friend! This bottle is made of lightweight, 100% BPA-free material and the detachable silicone bowl slides off the base when it's time to rehydrate a pet.



GILDAN® TEE

This is a great pick for a classic, breathable branded tee.



FLEECE BLANKET

This fleece blanket will be a hit for warming up on those cool summer nights.



KINTO DAY OFF TUMBLR

With great colors inspired by a relaxed beach resort, this stainless steel and vacuum-insulated tumbler has a rounded handle that is comfortable for carrying around on walks or day trips.



PORT & COMPANY®
TIE-DYE HOODIE

Trendy and youthful, shop the tie-dye hoodie for a unique branded piece.



LE BON SHOPPE BOYFRIEND SOCKS

Your employees or customers will stay fly and warm all year long with these socks that pair with any sneaker or slide.



W&P PORTER BAG

This 10 oz reusable bag is not only great for cooking, prepping, storing, or preserving food, it's also easy to clean.



MIIR® TUMBLER

This vacuum-insulated, stainless steel cup keeps drinks warm and cold, while the lid technology prevents spillage to make it easy to take beverages anywhere.



KELTY CAMP CHAIR

Light, foldable, portable, and very comfortable, this chair is a go-everywhere, sit-anywhere essential for camping, the beach, or outdoor event.




BLEGUM
BLEC
BLEC
BLEGUM
BLEC
BLEGUM
BLEC
BLEGUM
BLEC
BLEGUM




PUMA MEN'S WARM UP

This sleek and stylish quarter-zip with UPF 40 sun protection will complete your brand look at a golf tournament or outdoor event.



PARAVEL FOLD-UP BACKPACK

This versatile backpack is ready for action at the gym, on a trip, or on a daily commute. It folds flat and zips into a barely-there pouch for space-saving storage.



SMASH CHOCOLATE WITH CHAMPAGNE BUBBLES

Work anniversaries, milestones, and sales records deserve a smashing gift! This chocolate and champagne set comes in a mailer box with a full color label and customizable mallet for easy smashing.



PACK-IT™ COMPRESSION CUBE

Featuring an antimicrobial treatment, this cube set is for people who want to travel light while maximizing packing space.



NOMADIX STRIPED TOWEL

Dry off, lay out, work out, or travel with this all-in-one towel that provides a great look and versatility.



SPORT-TEK® RECYCLED TEE

Recycled polyester and color-locking technology make this sleek, moisture-wicking tee stand out from the pack.





**PORT AUTHORITY®
UV SHIRT**

Sun and moisture are no problem for this versatile, lightweight, highly breathable shirt. Its relaxed styling looks great for outdoor or indoor wear.



**BATCH & BODEGA
SCOOPS AND
SPRINKLES**

The most delicious at-home ice cream creations! Incorporate your branding to celebrate birthdays, work milestones, and more.



**SAMI LUNCH
COOLER BAG**

This snack or lunch cooler features recycled, laminated, nonwoven material with a fashionably subtle fleck detail.



STONEWARE MUG

This classic yet sleek mug features a matte exterior and gloss interior for maximum brand impact.



**BELLA +
CANVAS UNISEX
SWEATSHIRT**

This is not only a fashion-forward statement piece, but also a cozy staple.



**W&P WIDE-MOUTH
BOTTLE**

This leakproof, wide-mouthed bottle is ideal for smoothies, cold brews, or any other beverage on the go or at the office.



**W&P PORTER
LUNCH BOWL**

This bowl offers a stylish and eco-friendly way to bring lunch to the office.



**VUORI MEN'S
PONTO
PERFORMANCE
CREW**

This lightweight crewneck is perfect for layering up, with its quick-drying, moisture-wicking, buttery-soft fabric.

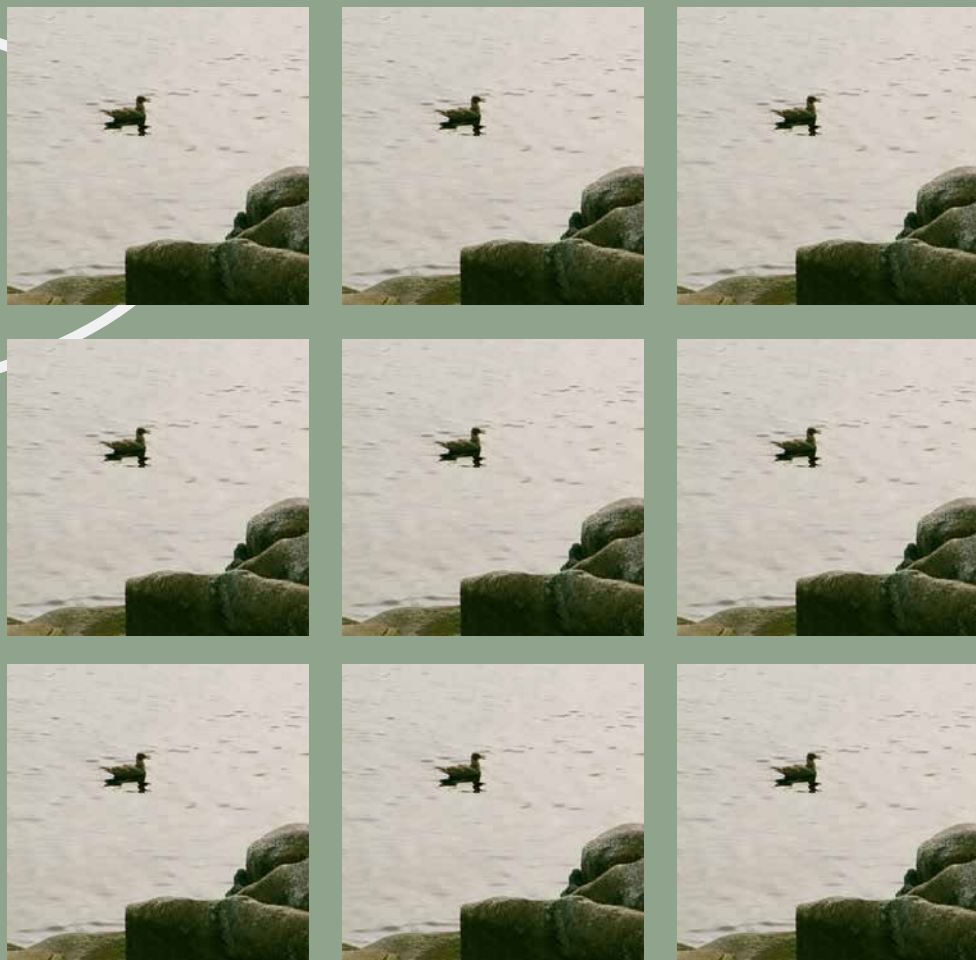


**GILDAN® PULLOVER
HOODIE**

Soft to touch with ring-spun cotton fabric, this hoodie is comfortable and will fit right in at the office or an event.



ZEN
ZEN
ZEN
ZEN
ZEN
ZEN
ZEN
ZEN
ZEN
ZEN



Where effortless confidence meets a calming breeze,

this trend celebrates the perfect harmony of elevated and chill. With these muted, earthy greens and soft, cool grays, your brand will be the epitome of modern sophistication.





MARINE LAYER WOMEN'S HOODIE

This absurdly soft hoodie is lightweight and durable, providing comfort and style on the go.



DISTRICT® V.I.T.™ FLEECE JOGGER

These soft joggers are everything and more, with both a stylish look and a comfortable feel.



FELLOW® CARTER EVERYWHERE MUG

Don't compromise any coffee drinking experience with this travel tumbler! Enjoy coffee to the fullest on the go.



BARONFIG TOOL CUP

Keep a clean, organized desk by fitting all the essentials in this modern tool cup.



PAPERZEN PERFECT BOUND JOURNAL

This easy-to-use, everyday notebook is handy for going through daily tasks or taking meeting notes.



MARINE LAYER LINED BLANKET

Get all the feels with this extremely soft, lovable blanket!



H2GO RANGER

Any beverage of choice will stay hot or cold in this double-wall stainless steel thermal bottle with copper vacuum insulation.



FLIP & TUMBLE BACKPACK

This retro-style backpack completes any adventure. This foldable design has a built-in pouch for easy portability.



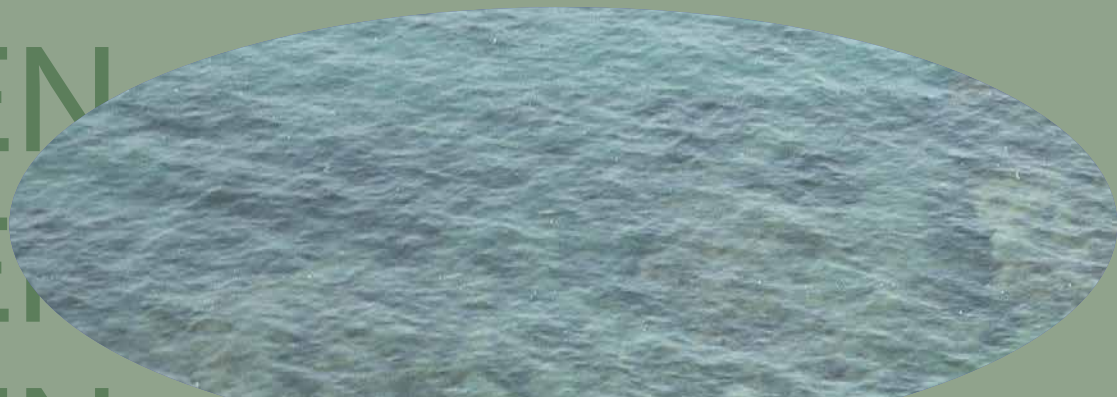
LE BON SHOPPE GIRLFRIEND SOCKS

These crew socks make a statement when paired with some go-to sneakers or sandals for a cozier look.





ZEN
ZEN
ZEN
ZEN
ZEN
ZEN
ZEN
ZEN
ZEN
ZEN
ZEN



NIKE® DRAWSTRING BACKPACK

This bag delivers on the promise of grab and go, with a lightweight design, open top, and drawstring closure.



BALLPOINT PEN

This brass, twist-action pen performs with precision and durability.



BRUMATE HOPSULATOR TRIO, 3-IN-1 CAN-COOLER

This versatile cooler fits 16 oz craft cans, has a freezable adapter for 12 oz cans, and can turn into a 16 oz pint glass. Cheers!



MERCER + METTLE™ MEN'S RAINSHELL

This fully seam-sealed jacket features a three-panel locking drawstring hood, an interior storm flap and reinforced waterproof zipper.



MERCER + METTLE™ WOMEN'S RAINSHELL

This high style and high-performance jacket for ladies has a functional design and is water repellent, making it easy to trek through any storm.





MERCER+METTLE™ JACKET

Dress it up or dress it down for the office. Being able to get the laid-back look of a sweatshirt or a sophisticated button-down makes this piece versatile.



PAPERZEN SLIM WALLET

This durable, lightweight, and washable wallet keeps it simple while still making a statement.



NIKE® BACKPACK

This versatile backpack delivers brand cred as a conference registration gift, commuter pack, or gym bag.



ALLMADE® UNISEX TANK

This extra soft and sustainable unisex tank is made of six recycled plastic water bottles, making an impact in the office and in the world.



CONTIGO ASHLAND CHILL 2.0

This double-wall stainless steel design with an autospout threaded lid and straw makes the perfect everyday water bottle.



VUORI WOMEN'S PERFORMANCE JOGGER

Designed with DreamKnit™, one of the softest premium stretch fabrics, this relaxed and slim fit is perfect for anyone wanting a cozy look.



BARONFIG DESK ORGANIZER

Arrange and elevate any workspace with this simple yet sleek desk organizer.



CHORE FLEECE PULLOVER HOODIE

This durable heavy-weight hoodie is made to last and gets the job done.



TECH BACKPACK

This smooth-to-touch backpack with sturdy functionality is perfect for the everyday commuter.



AMERICAN TRENCH MERINO ACTIVITY SOCKS

This wool sock is designed to power through any activity, making it durable, reliable, and comfortable.



BARONFIG SQUIRE BALLPOINT PEN

Everyone wants to have a good pen on hand. This one is built with attention to detail so it's always ready for the ideas to flow.



NODPOD® BODY

This weighted blanket is the ultimate creature comfort, easing overactive minds as well as stress and anxiety.





**SNOOZ TRAVEL
WHITE NOISE
MACHINE**

No one will lose sleep on the go with this portable white noise machine with built-in Bluetooth. They'll catch the snoozes without any hassles.



**TRAVIS MATTHEW
COLD BAY VEST**

This quilted lightweight puffer vest is the best first defense against chilly weather, while also looking sleek and modern.



**ON THE DAILY
KIT**

This daily kit has all the essentials to keep employees or prospects on the grind and getting it all done.



**OSPREY® 2 LITER
HYDRAULICS
RESERVOIR**

This 2-liter hydration reservoir is ideal for large-volume packs and long-duration activities loved by ambitious outdoor adventurers.



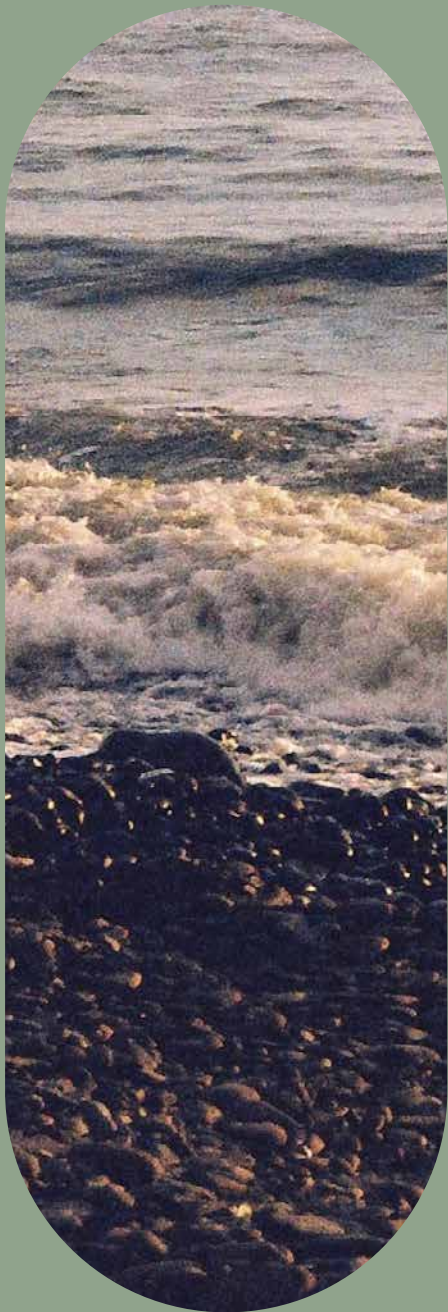
**OGIO® LADIES
AND MEN'S LONG-
SLEEVE SHIRTS**

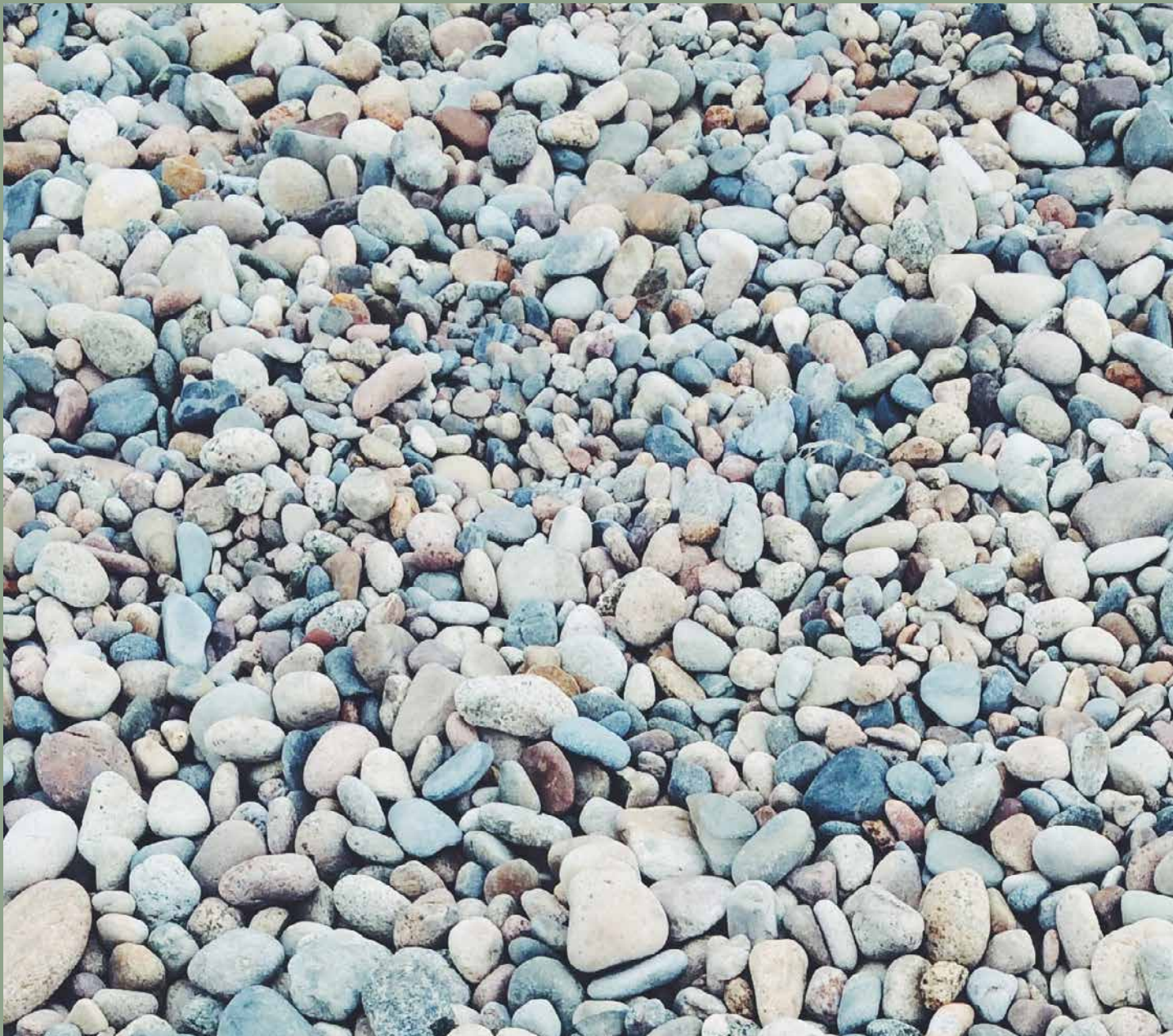
Cozy but refined, this look is elevated enough for the office while also being perfect for travel.



**VUORI WOMEN'S
SUNRISE HIGH
NECK TANK**

This performance tank works both in the studio and on the street with a moisture-wicking stretch rib knit that moves with every move.





**PORT AUTHORITY®
QUARTER-ZIP**

Made from recycled polyester, this quarter-zip is also carbon neutral as part of the manufacturer's carbon offset program. The fabric is snag-proof and moisture-wicking.



**PORT AUTHORITY®
BUCKET HAT**

This hat is not only oh-so on-trend this season, but it also has that all-important sun protection for all outdoor activities.



**PORT AUTHORITY®
VENTILATED HAT**

Whether there is an outdoor event or team bonding in the sun, this poly air mesh hat has UPF 30+ sun protection and a moisture-wicking sweatband to keep the day going.



**PORT AUTHORITY®
ECO TRUCKER CAP**

Trucker hats are on the trend charts and for good reason. Get with the look and feel like an all-star.



**RUSSELL ATHLETIC
UNISEX QUARTER
ZIP FLEECE**

Made with sustainably sourced USA cotton, this unisex quarter-zip fleece features moisture-wicking technology.



PSYCHEDELIC
PSYCHEDELIC
PSYCHEDELIC
PSYCHEDELIC
PSYCHEDELIC
PSYCHEDELIC
PSYCHEDELIC
PSYCHEDELIC

When Tik Tok made the 90s cool again, the fashion and design worlds went all-in for Spring. Shocking fuchsia and luscious purple are quenching our thirst to be free-spirited, while flared jeans and trucker hats are our go-to playtime looks. It's all about

channeling your
brand's inner Y2K.





ANKER® BLUETOOTH SPEAKER

With 16 hours of playtime per charge, this portable speaker will be the hit of every party. The LEDs blink and dance to create a beat-driven light show.



BATH TOWEL

This soft, reversible, organic terry cloth bath towel will keep your brand top-of-mind at home or on the beach!



YOGA MAT

Tap into the wellness trend with a branded mat for yoga or home workouts. Pair it with hand weights or towel for a thoughtful gift set.



BATCH & BODEGA SUGAR RUSH

What a sweet surprise! This set includes toffee, sprinkles, and cotton candy—all imaginatively flavored and packaged for a sweet tooth utopia. The holographic foil box is customizable.



XOPAR® BLUETOOTH SPEAKER

This speaker connects wirelessly up to thirty feet away while playing the best tunes or audio content. The wrist strap makes it easy to take on the go.



WONDERWINK® WOMEN'S JOGGER PANT

These joggers provide a modern fit with comfort. The leg comes with elastic cuffs and a half-back elastic waistband for maximum comfort.



BARREL DUFFLE

Made of recycled polyester, this multi-purpose duffel features an adjustable shoulder strap and hardware color-matched to the fabric for a totally on-brand look.



ZIPPER POUCHES

These popular pouches are designed to hold everything from pens and pencils to technology chargers and other miscellaneous cords and bits. The colors can be totally customized to your brand.



CORKCICLE® STEMLESS WINE CUP

This stemless wine cup keeps any beverage cold for up to nine hours and hot for up to three hours. Show your brand's playful side with this sparkly, new color.





**DAGNE DOVER
CARRY-ALL**

This travel buddy is perfect for any getaway and features a large interior with a recycled linking, as well as a shoe bag, zipper pockets, and other convenient compartments.



**BELLA + CANVAS
UNISEX TEE**

This retail fit unisex tee has a flattering neckline with shoulder taping, making it a perfect fit in the office, at an event, or on the go.



SNACK COOLER SET

This insulated cooler bag with a handle and front pocket makes it easy to use with a snack stacker to keep all the nibbles organized.



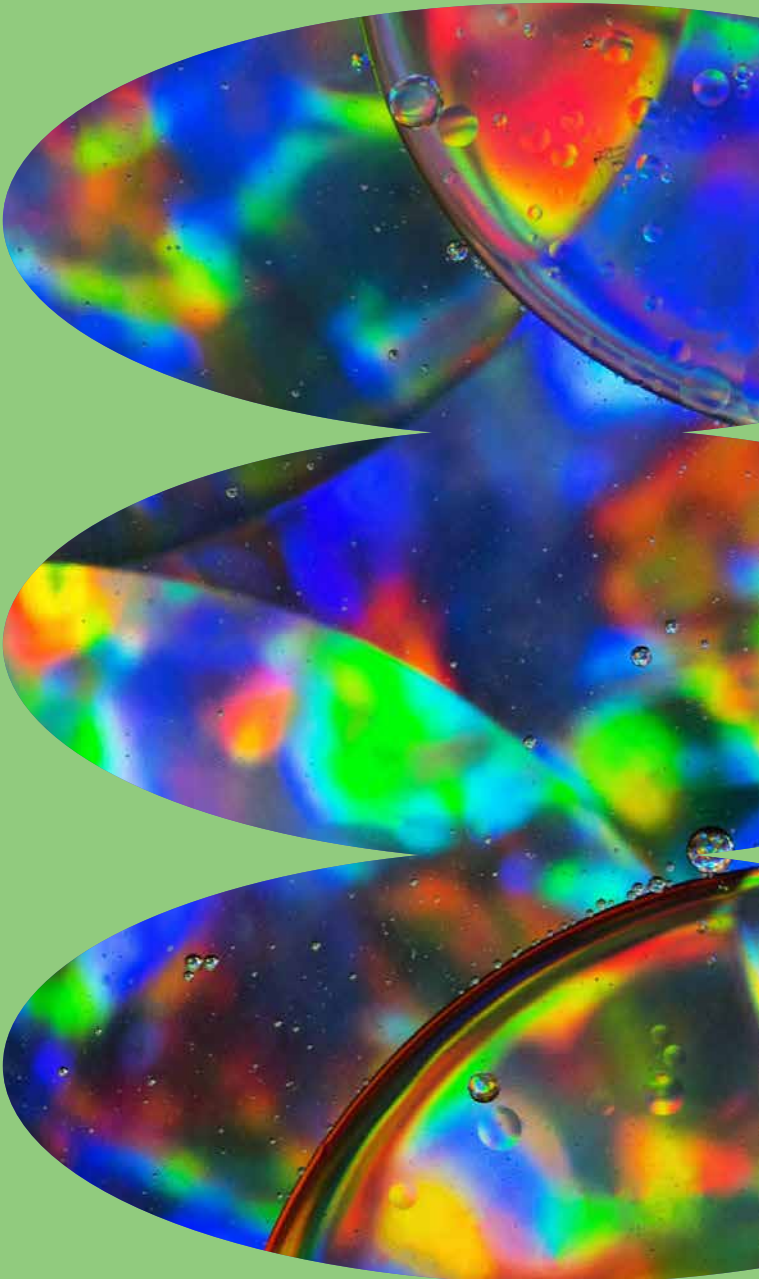
**FLIP & TUMBLE
DRAWSTRING
BACKPACK**

Light as air and easily stashable, this bag compacts from backpack to ball. The drawstring cinch-cord keeps contents secure while the wider straps keep it comfy.



**TERREX
SPORT BAG**

Your brand will hit the gym in style when it's decorating this bag. The convenient strap can hold yoga mats, towels, or coats.





**DAY OWL
THE MORE BAG**

Shockingly durable and conveniently packable, this tote reimagines the reusable bag. It's roomy and comfortable and easily packed away.



**CORKICLE®
CLASSIC CAN
COOLER**

This new and improved can cooler keeps beverages cooled three times longer. Its double-walled vacuum insulated stainless chiller easily locks in any can for minimal movement.



**FELTRO WINE
CARRIER**

This elegant wine carrier will wow your VIPs and elevate an event gifting experience.



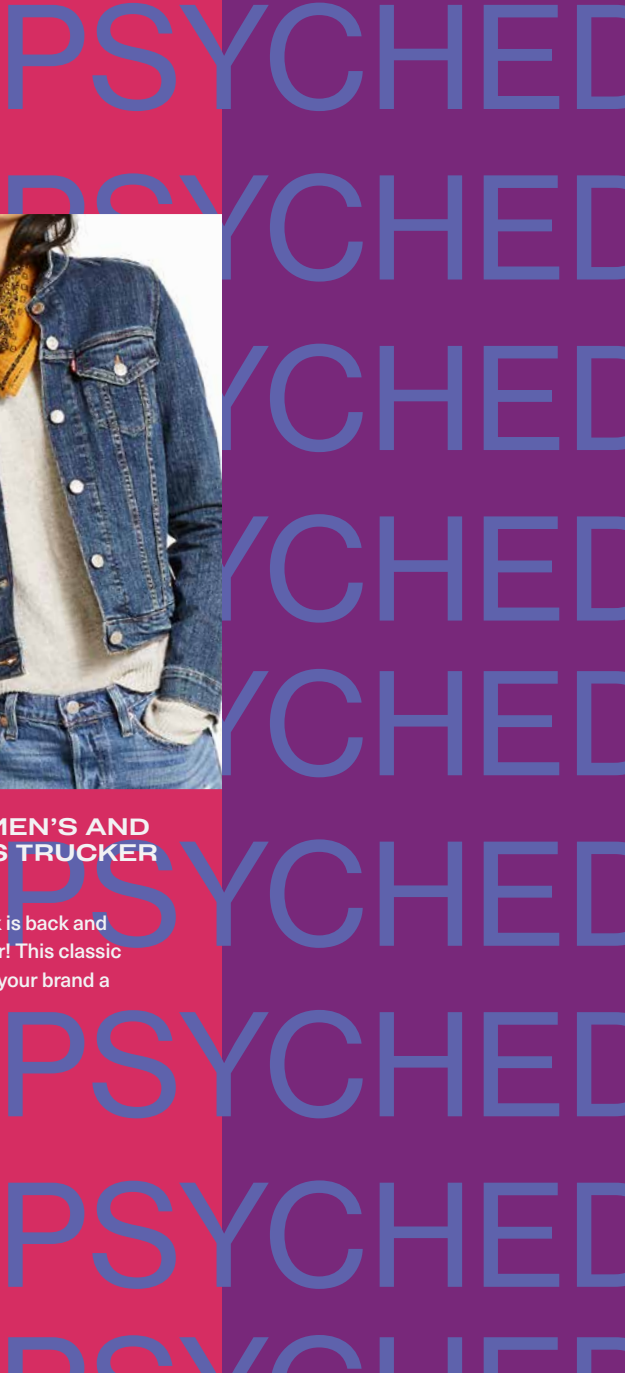
**TUCANO LAPTOP
SLEEVE**

This stretchy, thick neoprene laptop sleeve provides excellent coverage against bumps and scratches and has an external pocket for accessories. Comes in a variety of sizes.



**LEVI'S® MEN'S AND
WOMEN'S TRUCKER
JACKET**

The denim look is back and hotter than ever! This classic jacket will give your brand a youthful edge.



**UNISEX OFFROAD
CAP**

Old school looks are now new school! These three-color offroad caps will showcase your brand's urban style swagger.



**BELLA+CANVAS®
UNISEX TEE**

Made from soft fabrics, this unisex tee feels nice and breathable while still providing a flattering, retail look.



**SIERRA DESIGNS
HAMMOCK**

This easy-to-use and comfortable hammock will bring zen wherever, whenever. It's designed to protect trees wherever it's set up.



**HAPPY HOUR
COCKTAIL KIT**

Toast your customers' or employees' successes! This gift set provides all of the essentials with a fun twist, including snacks, mixers, a bottle, and tote.



**MARINE LAYER
REVERSIBLE
PULLOVER**

This reversible pullover has a crazy soft fabric that is warm and comfortable while still being stylish.





NOPOD® WEIGHTED EYE MASK

From one of the hottest, newer brands, this deep touch pressure weighted blanket for the eyes helps ease overactive minds and enhances a restful sleep.



FRANK GREEN ORIGINAL REUSABLE BOTTLE

This chic, lightweight, look-good, feel-good reusable bottle is great for people on the go. Its durable design is built to last and be spillproof.



UTENSIL KIT

Give the earth your brand love with this reusable set which includes a collapsible metal straw, fork, spoon, and carrying case.



NEW ERA® TRUCKER CAP

Your brand will look cool and keep people cool in this adjustable cap with mesh panels for ventilation and a contrast front.



MEN'S ORGANIC COTTON HOODIE

This classic men's hoodie is made with Fairtrade certified 100% organic cotton for a cleaner, comfier wear.



MEN'S DELTA PIQUE POLO

This versatile polo can be worn to an event, conference, work, or weekend leisure. Make the look completely your brand vibe.





OCEAN BOTTLE

This award-winning bottle not only keeps cold drinks cold and hot drinks hot, it's dishwasher safe. It's made of double-wall vacuum-insulated stainless steel and recycled materials.



PORT AUTHORITY®
MEN'S AND
WOMEN'S POLOS

Port Authority's C-FREE™ styles are neutralizing their environmental impact with a certified carbon offset program. This polo is also moisture-wicking and snag-proof for the ultimate professional look.



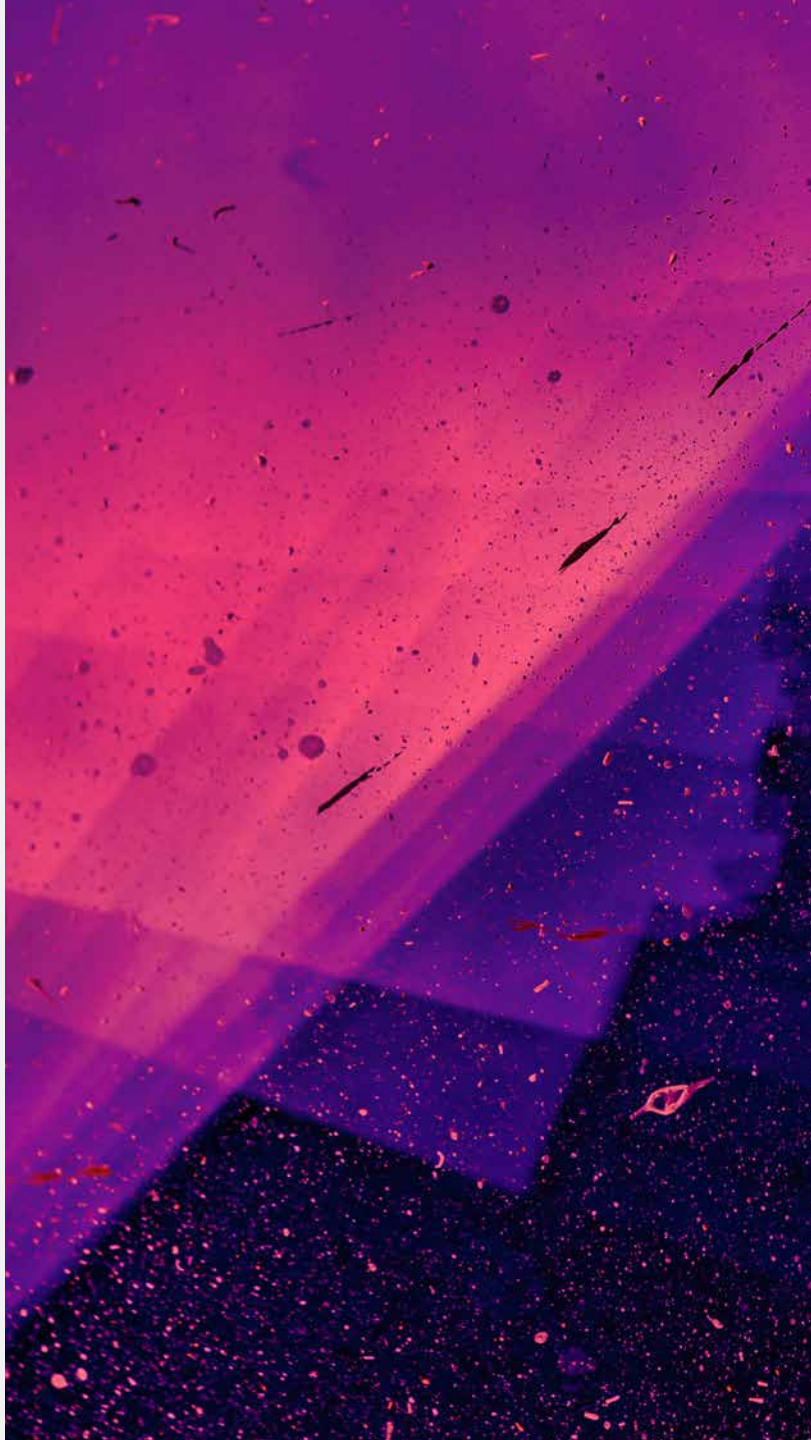
SIX-PACK TOTE

Made of wetsuit material, this high-quality tote can fit up to six 12 oz beers ensuring the safety of everyone's favorite drinks! The neoprene is available in 60+ colors, metallics and camo designs.



PET TRAVEL
ROLL-UP MAT

Keep pets comfortable on outings or road trips with this durable fabric, giving them an at-home feel wherever they are.



MEN'S SPORT TEK
SHORTS

Made with closed-hole mesh for a sporty look, this short is tailored for today's athlete who demands comfort and performance.



MESH COOLING
TOWEL

This multipurpose mesh cooling towel will complement any corporate event. It offers quick cooling relief after strenuous workouts or heat exposure.

OGIO® DUFFLE

This duffle has a roomy interior that can store a change of clothes and shoes, making it the perfect workout bag!



MINI EVERYDAY
BACKPACK

Fully customizable, this vegan leather backpack can showcase your brand attitude and be a one-of-a-kind, quality employee gift or giveaway.



FRESH
FRESH
FRESH
FRESH
FRESH
FRESH
FRESH
FRESH
FRESH



Breathe life into your spring swag.

Making a splash on every 2022 fashion runway, minty green brings the freshness of life this season. Dial it up with shiny blacks or tone it down with earthy neutrals and either way, it's an intoxicating look.





EVOLVE SLING BACKPACK

The sling bag is not only a trending look for 2022, this product also features recycled fabric and anti-microbial technology.



DAY OWL CORD POUCH

Keep cables and miscellaneous must-haves all in one nicely organized pouch that's made from recycled materials and helps create jobs around the world.



ORIGAUDIO® WIRELESS SPEAKER

Literally a two-for-one, this speaker can be separated into two speakers for true surround sound. A silicone sleeve makes it easy to twist back together and take on the go.



URBANISTA SOLAR-POWERED HEADPHONES

The first self-charging wireless headphones powered by solar cell material, this product converts all outdoor and indoor light into energy to deliver virtually infinite playing time.



LAPTOP STAND

This laptop or tablet stand offers the best possible angle while working or watching.



CLIP BUDDIES

Its clip design means this portable speaker can attach to backpacks, bags, belt loops, and more. It also includes earbuds for a solo listening experience option.



SPOT PRO WIRELESS TAG

Through a companion app, this wireless tag ensures any device is never lost and can be found. It includes a vegan leather strap and round metal carabiner.



FOSSA APPAREL FLEECE JACKET

Exceptionally warm and lightweight, this fleece jacket contains recycled materials and emphasizes a utility-focused design while still looking trendy.



MERCER + METTLE™ WOMEN'S CAMP BLOUSE

Taking a more refined approach to tailoring, this chic blouse offers movement and ease in a fine crepe fabric and soft fit.





This eco-friendly utensil set is durable and easy to take along for meals on the go. Pair it with a sustainable food storage product to create a perfect gift set.



BALI BAMBOO GLASS BOTTLE

Elevate the drinking experience with this 25 oz mixed glass and bamboo bottle featuring extra-thick borosilicate glass that creates a clean, odor-free taste.



BATCH & BODEGA SPEAKEASY

This customizable box set delivers delicious decadence to VIPs. The classy, matte black products include chocolate bourbon cookies, salty caramels, infused ice cubes, a pack of mixers, and a luxe flask.



**MERCER + METTLE™
WOMEN'S QUILTED
JACKET**

With reliable warmth and durable water-repellency in a lightweight package, this trendy bomber jacket is made for night-to-day wear.



FRESH
FRESH
FRESH
FRESH
FRESH
FRESH
FRESH
FRESH
FRESH
FRESH



RAINS WASH BAG

This simple wash bag has a minimal design to store essential toiletries. It's engineered to be durable with a smooth feel.



GLIMMER GIFT SET

Stunning by design and luxurious to the eye, this hand-poured, laser-engraved candle makes a statement.



**OGIO® LADIES
ANORAK**

Sleek, modern and built for movement, this water-repellent look easily works from home to the office to everywhere in-between.



FARMERS MARKET TOTE BAG

Bring this light and packable 100% cotton tote to the farmer's market, park, or shopping day out. Its simple design is simply lovely.





**MERCER + METTLE™
WEEKENDER
DUFFLE**

Minimalist design for maximum appeal, this adjustable and spacious interior is made for on-the-clock and off-duty wear.



**PORT AUTHORITY®
STAFF POLO**

Designed to perform with moisture-wicking technology, this polo has a professional edge for the office, trade show, or a conference.



**MELROSE PLACE
FLEECE JOGGERS**

Where street fashion meets comfort, these cozy joggers have an elevated look for universal appeal.



RECYCLED JOURNAL

Make an impact with this office essential! It's made of recycled ocean plastic and waste collected from the coastlines of developing countries.



**RAINS BUM
BAG MINI**

This versatile, waterproof bag is crafted with an adjustable webbing strap that can be worn over the shoulder, across the body, or at the waist. .



**WATERPROOF
PICNIC BLANKET-
IN-A-POUCH**

This waterproof, fold-up blanket makes any excursion a comfortable day out, whether it's a picnic, game day, or road trip.





**PORT
AUTHORITY®
SHOPPING TOTE**

This classic, durable, 100% cotton twill bag can carry all the essentials for a conference bag, special event, or daily commute.



**RHOMBUS LUXURY
WEEKENDER BAG**

This weekender duffle provides elegance and durability for taking on any memorable adventure.



**SATSUMA BENTO
LUNCH BOX**

Take lunch to the office in style with this traditional yet fashionable container. It's microwave-safe, freezer-safe, and dishwasher-safe.



TRAVEL CHAIR

Made with recycled fabric, this practical travel stool offers a break on any adventure. It's durable, comfortable, and weighs less than two pounds.



**BELLA +
CANVAS UNISEX
SWEATSHIRT**

This soft crewneck can be dressed up or down, making it an essential for any closet!



**ZIP & FLIP TRAVEL
PILLOW**

The cute bear converts into a neck travel pillow and keeps the pillow concealed and clean while traveling.



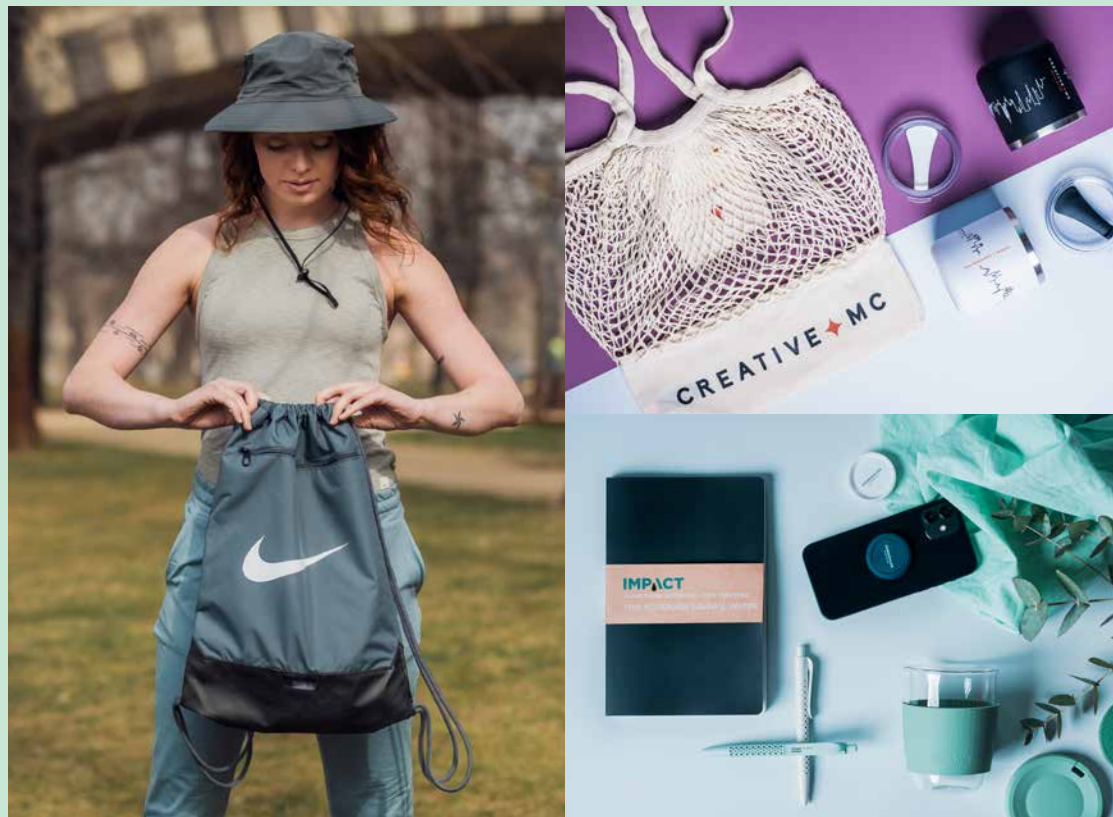
**HYPERGEAR
3-IN-1 WIRELESS
CHARGING DOCK**

Tired of cable clutter? This all-in-one wireless solution is a functional yet sleek desktop accessory.

**CHORE FLEECE
PULLOVER HOODIE**

This hefty fleece has a grittier, textured hand—plus it's crafted with durability to stand the test of time.





Create your best brand moments

Where your brand objectives meet the highest quality designs and new product trends is where CreativeMC's magic happens. Our team of expert Brand Stylists - many hired from fashion and retail industries - designs every swag project to create brand-defining moments to propel your resonance and impact.


CREATIVE
VISION


PREMIUM
SOURCING


BESPOKE
PRODUCTS


GLOBAL
REACH



Premium gifting made easy

We've vetted hundreds of suppliers so you can trust our sources to deliver the quality you demand. With over 50 retail brand partners, we design custom gift sets and bespoke products that not only reflect the latest looks, but also create wow factor for your employees, clients, prospects, and VIPs.





Making a difference for people and our planet

SUSTAINABILITY

Reduce, reuse and recycle. Sustainable swag is sweeping the industry and we've built extensive relationships with the best suppliers. For every client order of an eco-friendly product, we'll plant 10 trees through our partnership with One Tree Planted.

SOCIAL GOOD

Show your company's soulful side by making merch that matters. From retail brands that contribute a portion of revenues to charities and social impact causes, to ethically sourced materials, your swag can help others.

UNDERREPRESENTED

As an employee-owned company that's 70% female and 47% people of color, diversity is who we are—not an initiative. We proudly source and champion a portfolio of quality brands led by people of underrepresented communities, including BIPOC, AAPI, and women.



Designed to impress, delivered drama free

Surprise and delight your gift recipients with stunning packaging and wrapping. Our team takes pride in precisely packing every box to perfection, and can even write personal notes on your behalf.

Our extensive online store offering means your team can order 24/7 on demand and your recipients can easily and securely claim gifts for an event or conference. Our virtual company store platform can be tailored to your requirements, including multiple store views to support different programs and key initiatives. Ask our team for a demo!

IER TRENDS
MER TRENDS
MER TRENDS
MER TRENDS
MER TRENDS
MER TRENDS
MER TRENDS
MER TRENDS
MER TRENDS
MER TRENDS

CREATIVEMC.COM (415) 941-4000 TEAM@CREATIVEMC.COM

